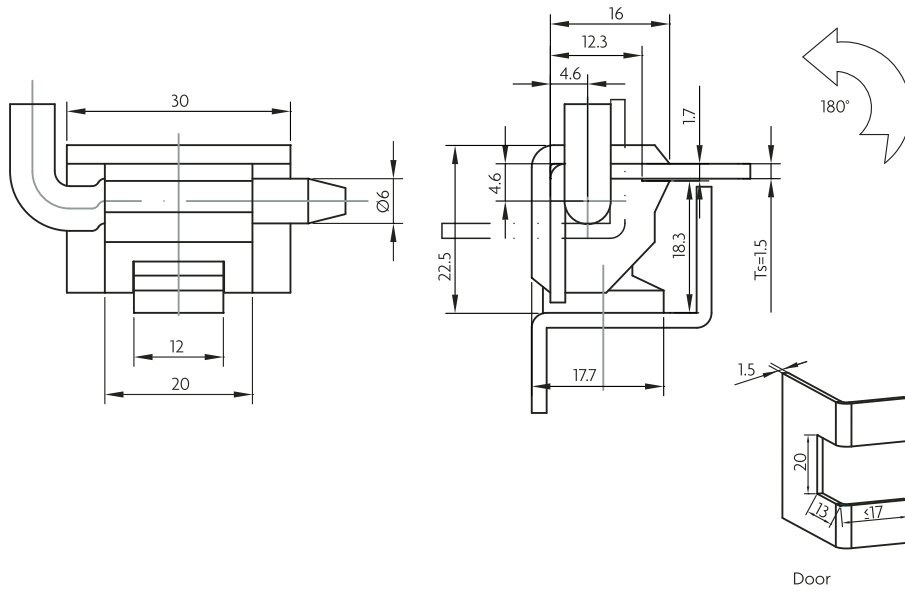
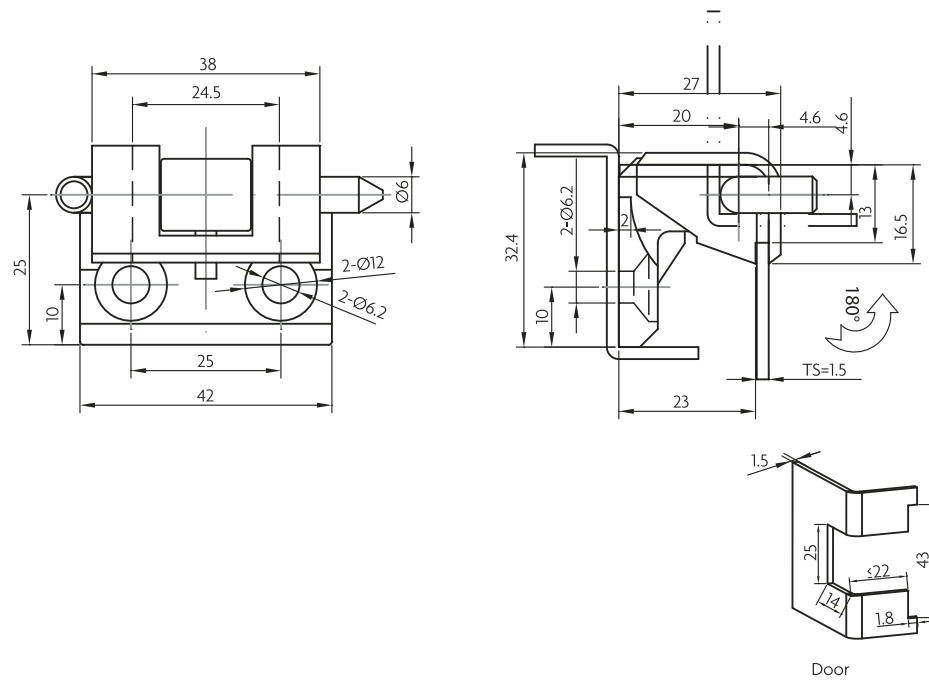


**EXTERNAL HINGE**

Zinc die casting, M.S. zinc plating or SUS pin, powder coated or chrome surface treatment.



Panel Thickness	Matte Black Powder Coat	Bright Chrome
Ts=1.50mm	2305-15-10	2305-15-30
Ts=2.00mm	2305-20-10	2305-20-30



Zinc die casting, M.S. zinc plating or SUS pin, powder coated or chrome surface. Washers.

Panel Thickness	Matte Black Powder Coat	Bright Chrome
Ts=1.50mm	2306-15-10	2306-15-30
Ts=2.00mm	2306-20-10	2306-20-30

